



TARANATH SHIKSHANA SAMSTHE'S

# SOMA SUBHADRAMMA RAMANGOUND ARTS & COMMERCE COLLEGE FOR WOMEN

Station Road, Raichur - 584101

(Affiliated to Karnataka State Akkamahadevi Women University, Vijayapura)  
Re-Accredited by NAAC with "B" Grade



Website: [www.ssrarians.org](http://www.ssrarians.org)

Email: [ssrgwcr20@gmail.com](mailto:ssrgwcr20@gmail.com)

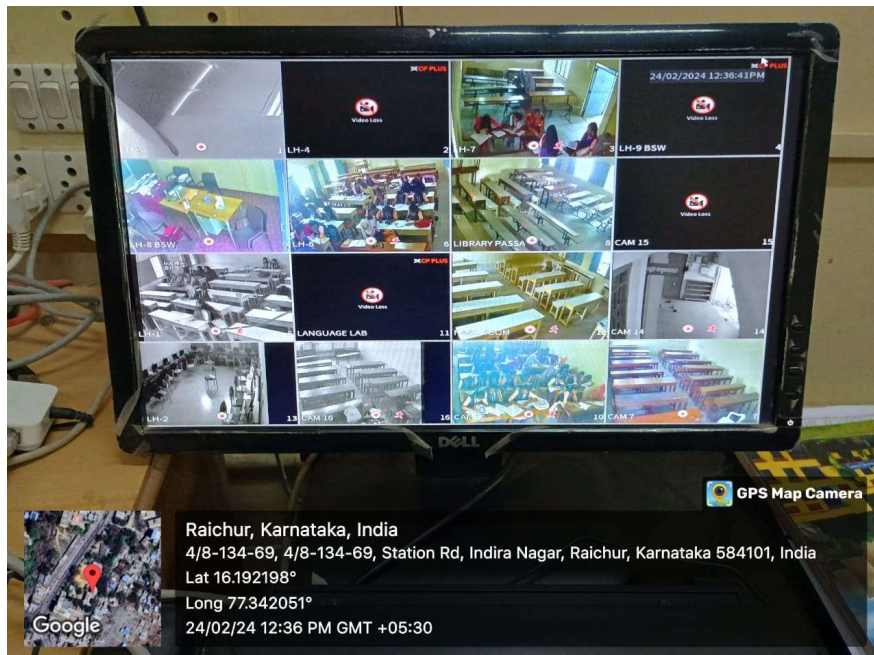
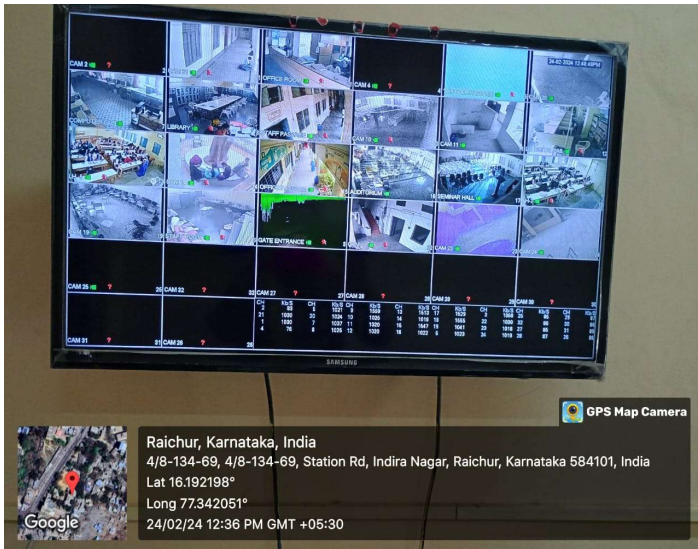
AISHE Code: C-8703

Fax: 08532-225770

Principal: Sri. Amaregouda. S. M.A, M.Phil.

## 7.1.1 Measuring Initiated by the Institution for the promotion of Gender Equity during the Year 2022-23

GEO tagged photos of e-surveillance with High Resolution C.C Cameras are adopted in the Institution for the Safety and Security of the Female Students.



*(Signature)*  
IQAC Co-ordinator  
S.S.R.G. Women's College,  
RAICHUR-584 101.

*(Signature)*  
PRINCIPAL  
S.S.R.G. Women's College, RAICHUR



TARANATH SHIKSHANA SAMSTHE'S

# SOMA SUBHADRAMMA RAMANGOUD ARTS & COMMERCE COLLEGE FOR WOMEN

Station Road, Raichur - 584101

(Affiliated to Karnataka State Akkamahadevi Women University, Vijayapura)

Re-Accredited by NAAC with "B" Grade



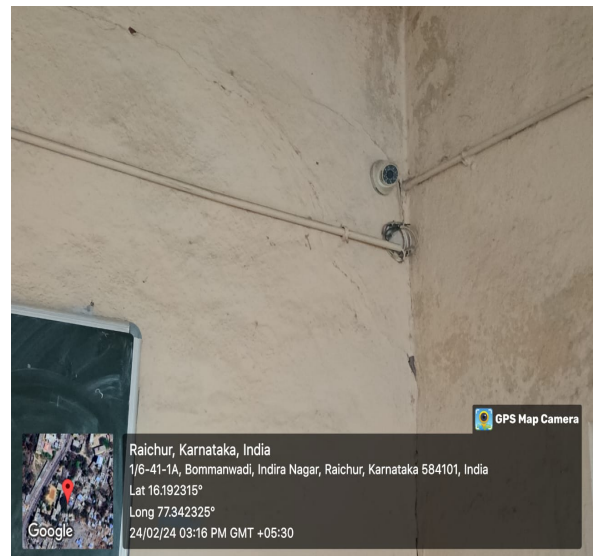
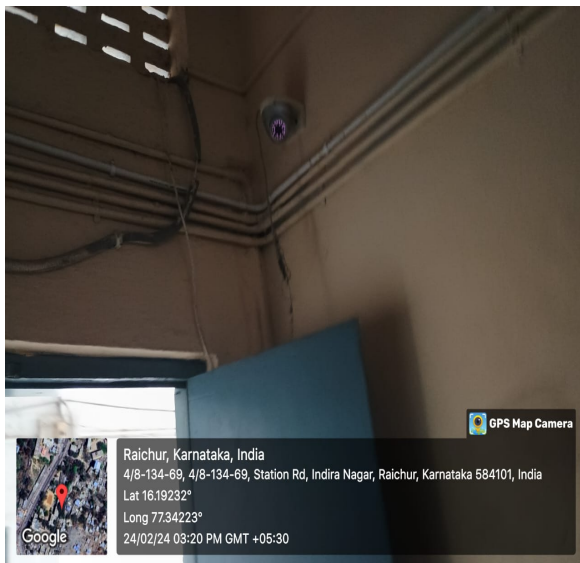
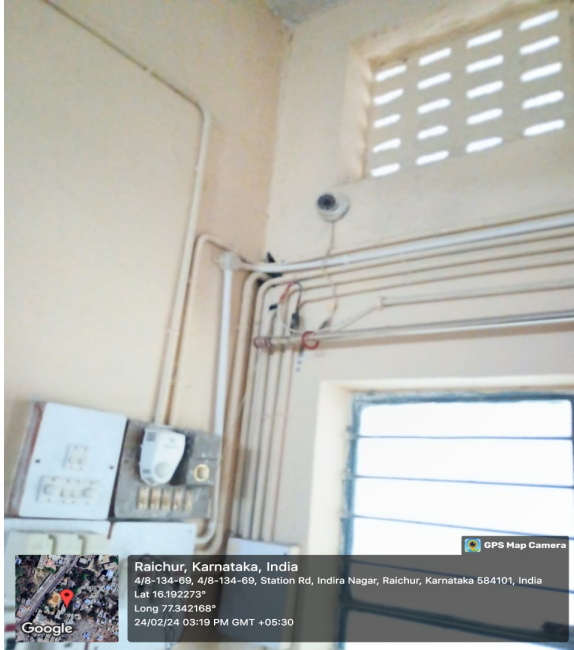
Website: [www.ssrarians.org](http://www.ssrarians.org)

Email: [ssrgwcr20@gmail.com](mailto:ssrgwcr20@gmail.com)

AISHE Code: C-8703

Fax: 08532-225770

Principal: Sri. Amaregouda. S. M.A, M.Phil.



  
IQAC Co-ordinator  
S.S.R.G. Women's College,  
RAICHUR-584 101.

  
PRINCIPAL  
S.S.R.G. Women's College, RAICHUR



TARANATH SHIKSHANA SAMSTHE'S

# SOMA SUBHADRAMMA RAMANGOUND ARTS & COMMERCE COLLEGE FOR WOMEN

Station Road, Raichur - 584101

(Affiliated to Karnataka State Akkamahadevi Women University, Vijayapura)

Re-Accredited by NAAC with "B" Grade



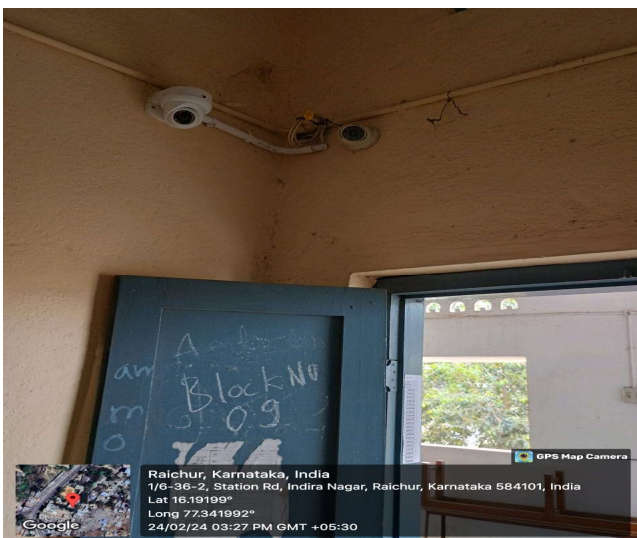
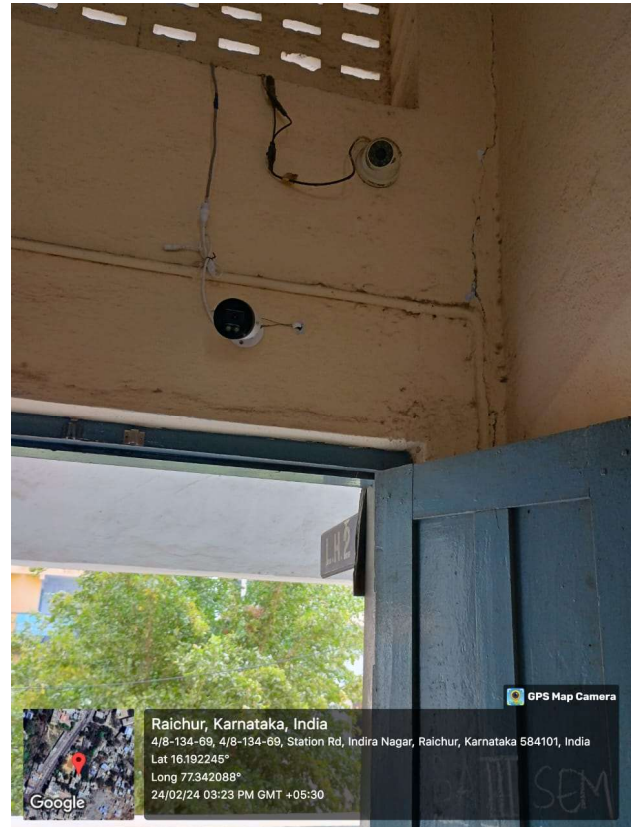
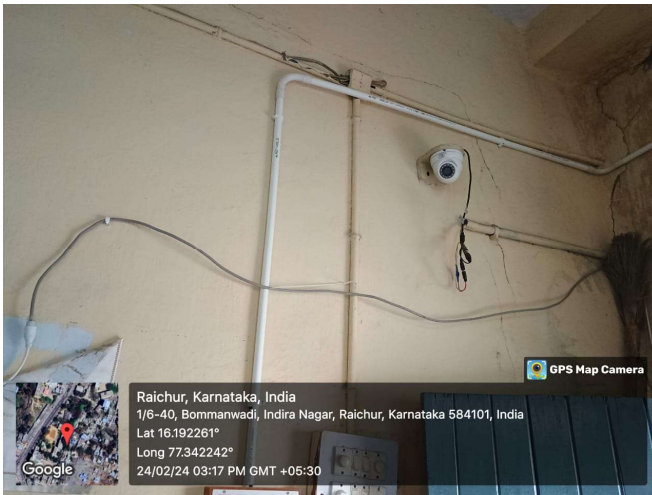
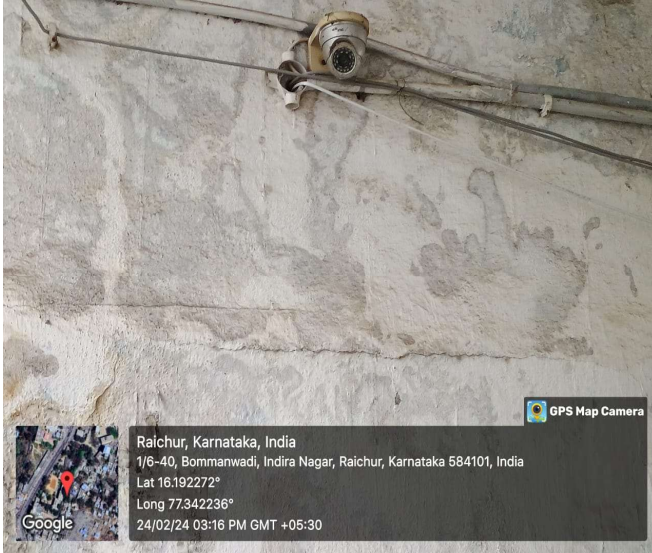
Website: [www.ssrarians.org](http://www.ssrarians.org)

Email: [ssrgwcr20@gmail.com](mailto:ssrgwcr20@gmail.com)

AISHE Code: C-8703

Fax: 08532-225770

Principal: Sri. Amaregouda. S. M.A, M.Phil.



  
IQAC Co-ordinator  
S.S.R.G. Women's College,  
RAICHUR-584 101.

  
PRINCIPAL  
S.S.R.G. Women's College, RAICHUR



TARANATH SHIKSHANA SAMSTHE'S

# SOMA SUBHADRAMMA RAMANGOUD ARTS & COMMERCE COLLEGE FOR WOMEN

Station Road, Raichur - 584101

(Affiliated to Karnataka State Akkamahadevi Women University, Vijayapura)

Re-Accredited by NAAC with "B" Grade



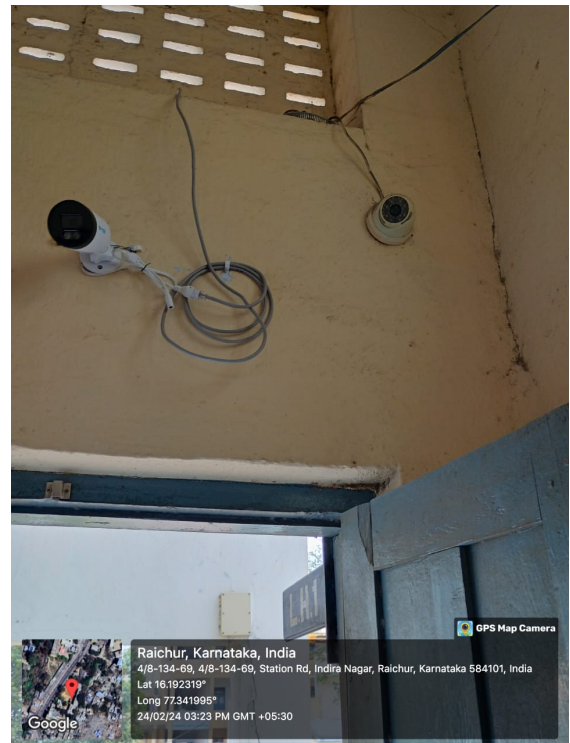
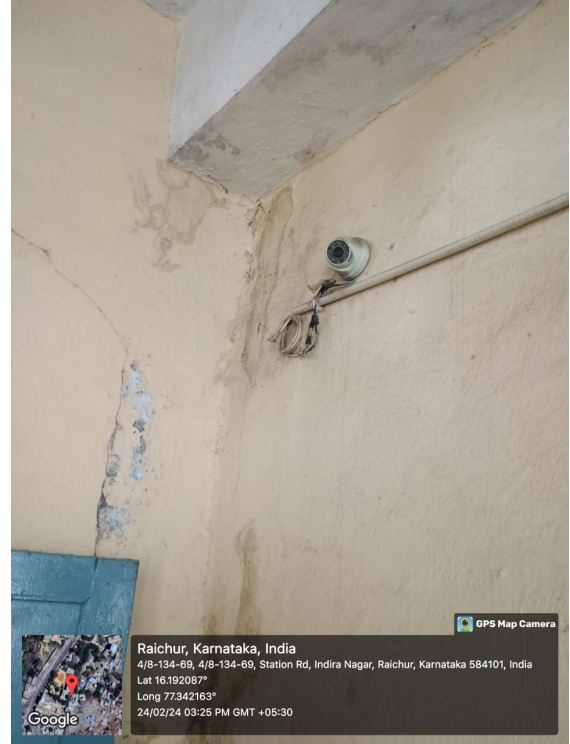
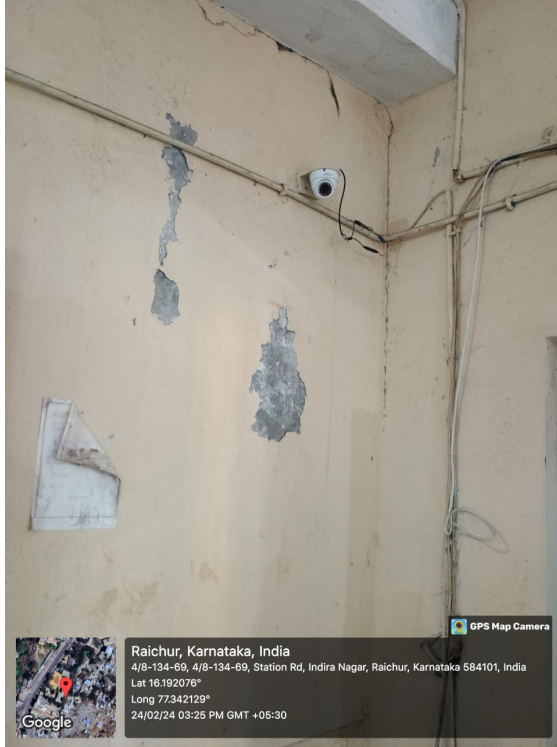
Website: [www.ssrarians.org](http://www.ssrarians.org)

Email: [ssrgwcr20@gmail.com](mailto:ssrgwcr20@gmail.com)

AISHE Code: C-8703

Fax: 08532-225770

Principal: Sri. Amaregouda. S. M.A, M.Phil.



  
IQAC Co-ordinator  
S.S.R.G. Women's College,  
RAICHUR-584 101.

  
PRINCIPAL  
S.S.R.G. Women's College, RAICHUR



TARANATH SHIKSHANA SAMSTHE'S

# SOMA SUBHADRAMMA RAMANGOUND ARTS & COMMERCE COLLEGE FOR WOMEN

Station Road, Raichur - 584101

(Affiliated to Karnataka State Akkamahadevi Women University, Vijayapura)

Re-Accredited by NAAC with "B" Grade



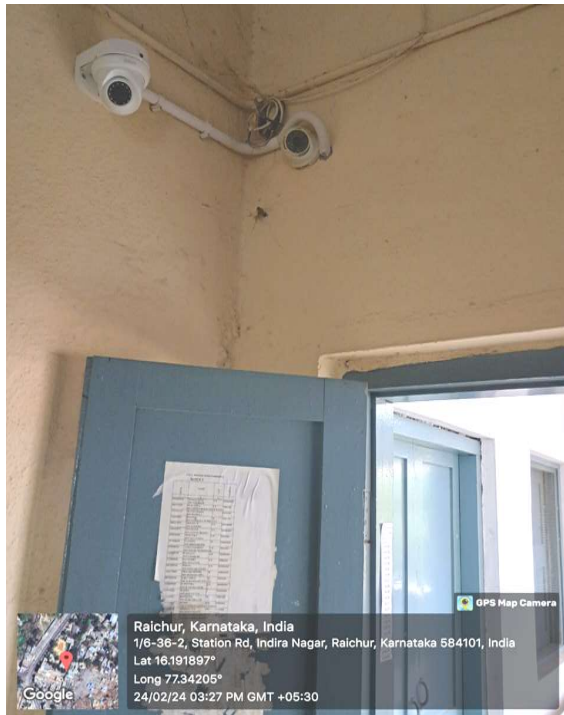
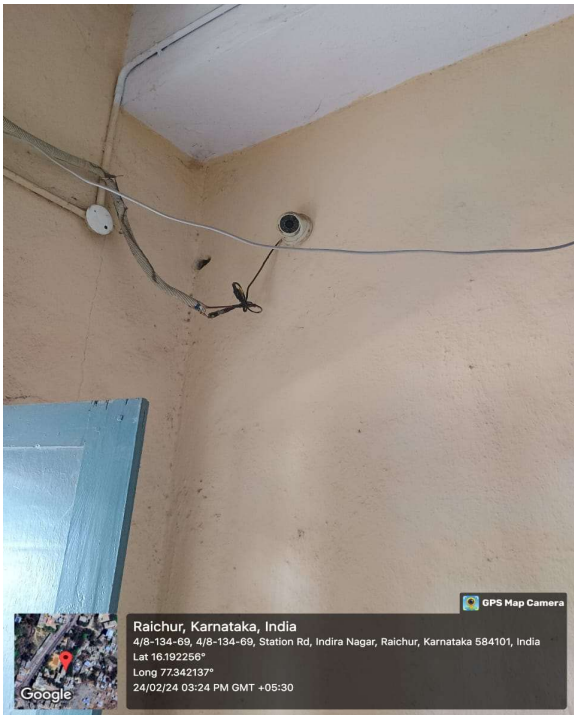
Website: [www.ssrarians.org](http://www.ssrarians.org)

Email: [ssrgwcr20@gmail.com](mailto:ssrgwcr20@gmail.com)

AISHE Code: C-8703

Fax: 08532-225770

Principal: Sri. Amaregouda. S. M.A, M.Phil.



  
IQAC Co-ordinator  
S.S.R.G. Women's College,  
RAICHUR-584 101.

  
PRINCIPAL  
S.S.R.G. Women's College, RAICHUR



TARANATH SHIKSHANA SAMSTHE'S

# SOMA SUBHADRAMMA RAMANGOUD ARTS & COMMERCE COLLEGE FOR WOMEN

Station Road, Raichur - 584101

(Affiliated to Karnataka State Akkamahadevi Women University, Vijayapura)  
Re-Accredited by NAAC with "B" Grade



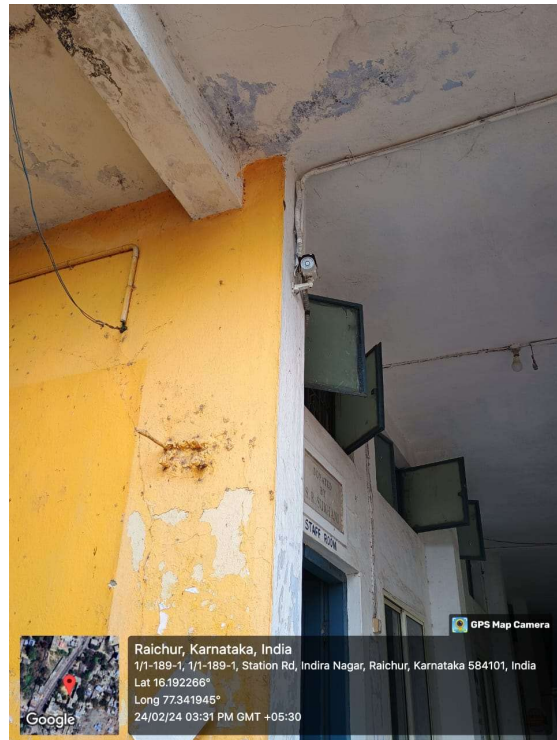
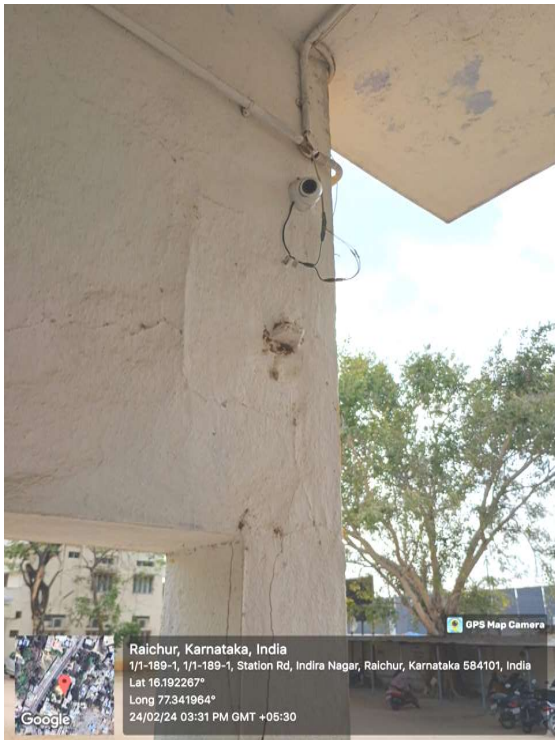
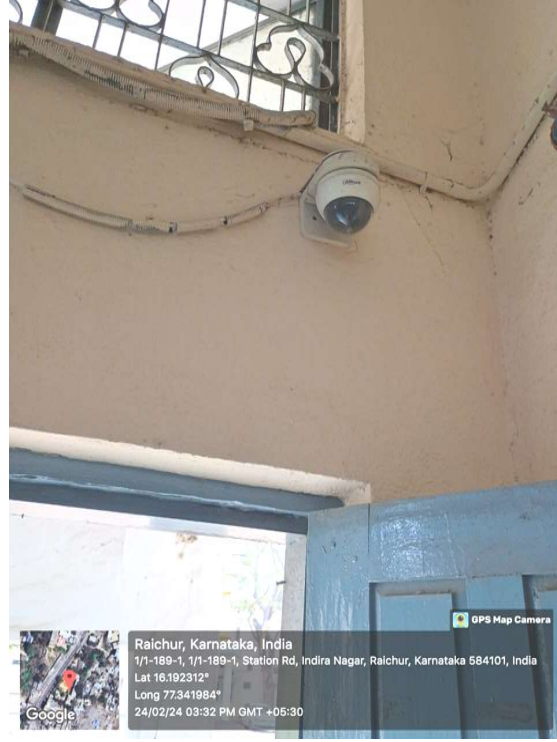
Website: [www.ssrarians.org](http://www.ssrarians.org)

Email: [ssrgwcr20@gmail.com](mailto:ssrgwcr20@gmail.com)

AISHE Code: C-8703

Fax: 08532-225770

Principal: Sri. Amaregouda. S. M.A, M.Phil.



  
IQAC Co-ordinator  
S.S.R.G. Women's College,  
RAICHUR-584 101.

  
PRINCIPAL  
S.S.R.G. Women's College, RAICHUR



TARANATH SHIKSHANA SAMSTHE'S

**SOMA SUBHADRAMMA RAMANGOUD ARTS & COMMERCE COLLEGE FOR WOMEN**

Station Road, Raichur - 584101

(Affiliated to Karnataka State Akkamahadevi Women University, Vijayapura)  
Re-Accredited by NAAC with "B" Grade



Website: [www.ssrarians.org](http://www.ssrarians.org)

Email: [ssrgwcr20@gmail.com](mailto:ssrgwcr20@gmail.com)

AISHE Code: C-8703

Fax: 08532-225770

Principal: Sri. Amaregouda. S. M.A, M.Phil.

## Security Desk for Female Students



  
IQAC Co-ordinator  
S.S.R.G. Women's College,  
RAICHUR-584 101.

  
PRINCIPAL  
S.S.R.G. Women's College, RAICHUR



TARANATH SHIKSHANA SAMSTHE'S

**SOMA SUBHADRAMMA RAMANGOUD ARTS & COMMERCE COLLEGE FOR WOMEN**

Station Road, Raichur - 584101

(Affiliated to Karnataka State Akkamahadevi Women University, Vijayapura)  
Re-Accredited by NAAC with "B" Grade



Website: [www.ssrarians.org](http://www.ssrarians.org)

Email: [ssrgwcr20@gmail.com](mailto:ssrgwcr20@gmail.com)

AISHE Code: C-8703

Fax: 08532-225770

Principal: Sri. Amaregouda. S. M.A, M.Phil.

## Photographs of Girls Students Participation in Sports



  
IQAC Co-ordinator  
S.S.R.G. Women's College,  
RAICHUR-584 101.

  
PRINCIPAL  
S.S.R.G. Women's College, RAICHUR





TARANATH SHIKSHANA SAMSTHE'S

**SOMA SUBHADRAMMA RAMANGOUD ARTS & COMMERCE COLLEGE FOR WOMEN**

Station Road, Raichur - 584101

(Affiliated to Karnataka State Akkamahadevi Women University, Vijayapura)

Re-Accredited by NAAC with "B" Grade



Website: [www.ssrarians.org](http://www.ssrarians.org)

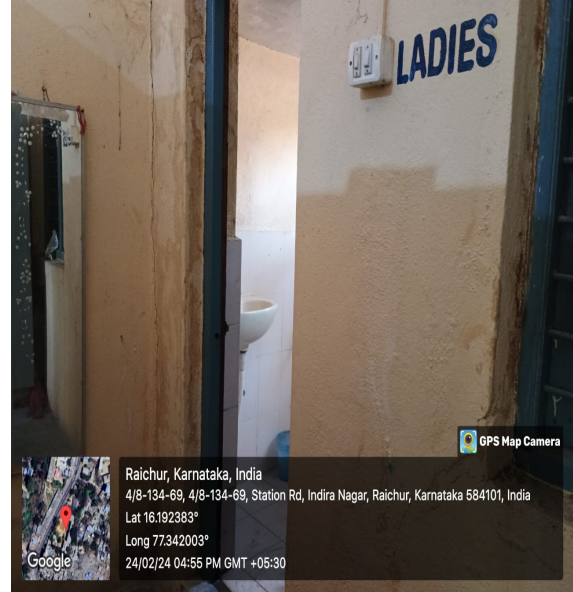
Email: [ssrgwcr20@gmail.com](mailto:ssrgwcr20@gmail.com)

AISHE Code: C-8703

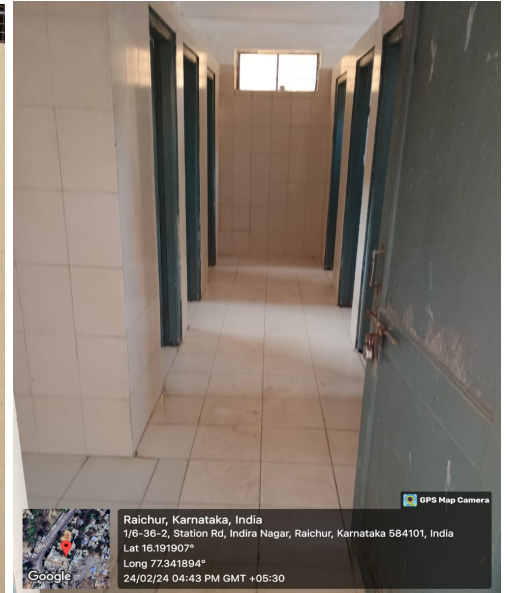
Fax: 08532-225770

Principal: Sri. Amaregouda. S. M.A, M.Phil.

## Washroom for Ladies Staff



## Washroom for Students



  
**IQAC Co-ordinator**  
S.S.R.G. Women's College,  
RAICHUR-584 101.

  
**PRINCIPAL**  
S.S.R.G. Women's College, RAICHUR



TARANATH SHIKSHANA SAMSTHE'S

**SOMA SUBHADRAMMA RAMANGOUND ARTS & COMMERCE COLLEGE FOR WOMEN**

Station Road, Raichur - 584101

(Affiliated to Karnataka State Akkamahadevi Women University, Vijayapura)

Re-Accredited by NAAC with "B" Grade



Website: [www.ssrarians.org](http://www.ssrarians.org)

Email: [ssrgwcr20@gmail.com](mailto:ssrgwcr20@gmail.com)

AISHE Code: C-8703

Fax: 08532-225770

Principal: Sri. Amaregouda. S. M.A, M.Phil.

## Photographs of Women's Personal Counselling



  
 IQAC Co-ordinator  
 S.S.R.G. Women's College,  
 RAICHUR-584 101.

  
 PRINCIPAL  
 S.S.R.G. Women's College, RAICHUR



TARANATH SHIKSHANA SAMSTHE'S

**SOMA SUBHADRAMMA RAMANGOUD ARTS & COMMERCE COLLEGE FOR WOMEN**

Station Road, Raichur - 584101

(Affiliated to Karnataka State Akkamahadevi Women University, Vijayapura)

Re-Accredited by NAAC with "B" Grade



Website: [www.ssrarians.org](http://www.ssrarians.org)

Email: [ssrgwcr20@gmail.com](mailto:ssrgwcr20@gmail.com)

AISHE Code: C-8703

Fax: 08532-225770

Principal: Sri. Amaregouda. S. M.A, M.Phil.

## Photographs of Ladies Room



  
IQAC Co-ordinator  
S.S.R.G. Women's College,  
RAICHUR-584 101.

  
PRINCIPAL  
S.S.R.G. Women's College, RAICHUR